



*Glen Waverley Uniting Church is a faithful,
Christ-centered community that meets
God and shares in that unconditional love.*

Indonesia Trip 2025

In May this year, a team of 6 from Glen Waverley Uniting Church travelled to North Sulawesi, Indonesia, to spend time in the town of Tondano with our partner congregation, GMIM Riedel Wawalintouan Church, and the wider GMIM church community (GMIM = Gereja Masehi Injili di Minahasa – Christian Evangelical Church in Minahasa). We were welcomed with extraordinary hospitality by Rev Dan Sompe, his wife Rev Laurine, their daughter Christine, and many other congregational and community leaders and members.



What We Did

- **Shared in worship** on Sundays across a number of GMIM congregations, preaching side by side with local ministers, with sermons translated sentence by sentence into Indonesian. And during the week we participated in various gatherings of elders, deacons, and lay groups.
- **Experienced the rhythm of community life** through countless meals, celebrations, and visits—funeral feasts, birthday parties, column (small group) gatherings, and women's and men's groups. Every occasion included worship, song, and prayer, followed by a feast and the inevitable round of photos.
- **Witnessed the joy of communal singing:** whether in worship, small groups, or impromptu choirs, people sang spontaneously, passionately and often unaccompanied, and invited us to do likewise!
- **Engaged in dialogue and learning**, including conversations with local pastors on theology and mission, students about faith and education, and university staff about technology and community leadership. Glyn participated in a climate change forum, and Beth gave a seminar on women's mental health and wellbeing.
- **Encountered interfaith cooperation** while visiting a local mosque and, most memorably, Indonesia's only synagogue, where we met the local rabbi and heard how Christians, Muslims, and Jews in the region work together for peace and understanding.
- **Met Angel Malonda**, an impoverished 21-year-old theology student who had paused her studies to work and care for her elderly relatives. Her intelligence, fluent English, and determination to return to study inspired us. Our team agreed that helping her complete her degree was a practical and personal way we could respond in partnership with GMIM Riedel, and so we have returned with a commitment to raise funds for her education.

Reflections

We went for many reasons: to strengthen our connection with our Indonesian brothers and sisters; to experience the faith, hope and love that flows through their life together; to bring our presence as a gift – and to receive the gift of them to us. The trip deepened our appreciation for the global church and the richness of Christian life across cultures. We saw faith lived in joyful resilience, collective worship, and deep hospitality. It was a profound experience of connection, challenge, and learning, and we look forward to continuing this partnership in the years to come.

Looking Forward

There are practical ways for our congregation to be part of this partnership. Some of our members are already joining Zoom English-speaking groups to help young people in Minahasa practise their conversation skills—an invaluable gift as many prepare for study or work opportunities abroad. Others may wish to contribute to the education of Angel Malonda, so that with our encouragement and financial help she can complete her degree and use her gifts in ministry. And there will be future opportunities to travel, to meet our GMIM friends in person, and to experience the richness of their faith and hospitality firsthand. However you choose to be involved—through prayer, English support, financial help, or perhaps joining a future visit—we hope you will be inspired by this living partnership in the gospel.

A week at GWUC...

Our usual services & events...

10am **Worship (+live broadcast)** incl. Sunday Squad Kids & Teen Programs
Holy Communion - 1st Sunday

1pm **Indonesian Fellowship** incl. *Holy Communion - 4th Sunday of each month*

5pm **FEAST (Friends Eating And Sharing Together)** *Please bring a plate of food to share*

MONDAY

10.00am **GOMERs**
10.00am **Patchwork & Craft Group**
2.00pm **Leisure Time**
8.00pm **Badminton**

TUESDAY

10.00am **The Hub**
10.00am **Playgroup**
2.00pm **Mindful Meditation on Zoom**

WEDNESDAY

8.00pm **Free Spirit**

THURSDAY

11.15am **English Conversation Class**
8.00pm **Badminton**

FRIDAY

9.30am **Choir of Hope**
7.00pm **Youth**

Please note: not all events are held each week - please contact the church office for details.

OUR CHURCH IS A BUSY PLACE 2024 Annual Report - OUT NOW

Reports from:

- The Ministry Team
- Adult Group
- Badminton & Table Tennis
- Broadcast Ministry
- Choir of Hope
- Church Council
- Communications
- Community Hub Missional Group
- Craft Group
- English as a Second Language
- Finance Committee
- Fish groups - Aqua, Purple
- Free Spirit
- Glen Waverley Secondary College Pancakes
- GOMER (Grumpy Old Men and Early Retirees)
- Inclusive Community Missional Group
- Friday Morning Bible Study
- Leisure Time
- Outreach and Social Justice Mission Group
- Meditation

Glen Waverley Uniting Church 2024 Annual Report



- People and Culture
- Playgroup Volunteers
- Property Committee
- Roster - Flowers
- Sunday Squad
- The Hub
- UCAF
- Youth Group

Go to [2024-Annual-Report-Kingsway-Special-Edition.pdf](#) to view your copy.



TUESDAY 10AM-12PM

Drop in for a cuppa
and a catch-up!

Badminton & Table Tennis

Monday &
Thursday
8pm to 10pm

No bookings
required

\$3 per session

MINISTERIAL REFLECTIONS

Sunday 6th July

Today we heard the story of the healing of Naaman the Syrian general by the prophet Elisha (2 Kings 5:1-19). Ian reflected on the way Naaman's salvation comes through the embrace of humility. This story offers a word to the powerful in an age of rising authoritarianism – strength and power are restored to relationship with God when they embrace vulnerability and humility.

Listen to the reflection at https://youtu.be/7MPqOXJkq_Q?t=2275 – How do you respond?



Sunday 13th July

Today we took a dive into the Good Samaritan parable found in Luke 12:25-37 and the start of Paul's letter to the Colossians in Colossians 1:1-15. The letter to the Colossians reminds us of the power of prayer and encouragement, showing how Paul, even from prison and without having met the believers, prayed faithfully for their growth, wisdom, and strength in faith. His example challenges us to care deeply for others, lifting them up regularly in prayer and encouraging them in their walk with God. Just as the Good Samaritan showed boundless love and care for a stranger in need, we too are called to be sources of love and support to those around us, reaching beyond distance and circumstance.

As you go about your week, remember to fill out your prayer sheet and intentionally pray for the people in your life—friends, family, neighbours, and even strangers. A short prayer can make a profound difference, offering peace, wisdom, and strength to those who need it. Let us be a community that carries one another in prayer and encouragement, reflecting God's limitless love and becoming a living letter of hope in a world hungry for kindness and grace.



Your own Weekly Prayer List can be downloaded from https://gwuc.org.au/wp-content/uploads/dlm_uploads/Weekly-Prayer-List.pdf

Sunday 20th July

Today Ian reflected on the story of Martha and Mary, using it to explore the balance between loving God and loving neighbour. He delved into the conflict between Martha's service and Mary's devotion, emphasising that service should be done with the right spirit, rooted in love. Martha isn't criticised for serving – after all, Jesus himself is the Servant Lord – but for how she approaches her service. Ian connected the story to the Parable of the Good Samaritan, highlighting the unlikely heroes in both stories—Mary, a woman defying cultural norms, and the Samaritan, an ethnic outsider. Together these stories encourage a harmony between service and devotion, where both are exercised with love, compassion, and a commitment to God and neighbour.

Listen to the full reflection at <https://youtu.be/8Zmw-EUXTMM?t=2428> – How do you respond?



Sunday 10th August

Today, Ian's reflection wove together the parable of the watchful servants in Luke 12:35-38 with his recent experience of abundant hospitality in Indonesia. The image of a master returning home and unexpectedly serving his servants is a vision of the "Great Reversal" – the overturning of status, privilege, and power in God's reign. Ian connected this to the radical hospitality of his Indonesian hosts, the discomfort of receiving honour, and the challenge of embodying Christ's way in a world of uncertainty, privilege, and inequality.

Ultimately, this gospel passage calls listeners:

- to live as hopeful, watchful members of God's household, shining like lamps in readiness for the coming Kingdom, and
- to practise humility, service, and mutual honour in anticipation of God's banquet of justice, peace, and joy.

Listen to the full reflection at <https://youtu.be/ehXVcfScqGI?t=2246>

Read Chat GPT's list of key "Great Reversal" passages at <https://www.dropbox.com/scl/fi/gvhcemjlk0bpm65112dyh/Great-Reversal-in-Luke.pdf?rlkey=wswbtp4uzog4i5qbbhmbwb1w&dl=0>



Send your thoughts to Ian at iferguson@gwuc.org.au or Chris at chris.waddell.gwuc@gmail.com.

Pastoral Care at Glen Waverley Uniting Church

Someone asked recently if we had pastoral care at Glen Waverley Uniting Church. My answer was "Yes we do have pastoral care but it may be different to what you have known in the past and what we have had in the past."

Pastoral care refers to the emotional, physical, and spiritual support that a pastor and others supply within a community. It is the responsibility of all community members to care for one another.

From the inception of the Uniting Church in 1977, pastoral care was carried out at Glen Waverley Uniting Church by the ministry team and elders. Elders met together every month for encouragement, learning and looking at ways that they could support the church family pastorally. Every elder had a small group of people whom he or she contacted regularly. They reported back to the Ministry team about any pastoral issues. The elders were supported by a team of visitors who had small groups of people to visit.

In 2013, following a review within the congregation by Carolyn Kitto on pastoral care and contact at Glen Waverley Uniting Church, it was decided to invite Sharonne Price to visit us and talk to congregational members about the Pastoral Partners program. This program had been running in South Australia for a number of years and Sharonne was one of a group who trialed and introduced the program. Information sessions were held on the Friday evening and Saturday and Sharonne preached on the Sunday. Following this weekend, volunteers were asked to attend some training sessions spread out over a few weekends. Some volunteers who were interested in being in the program were given a small group of people (5 or 6) whom they would contact regularly. It was felt that this would enable us to maintain contact with more people and supplement the visitation program carried out by elders. This program worked well for a number of years.

A few years ago, members of the Pastoral team, began contacting members of the congregation, to ask how happy they were with their pastoral care and if they would like contact by letter, email, telephone or group contact. The current group of visitors were

happy to have extra people added to their lists. Within groups, someone was responsible for checking up on people who didn't attend meetings and reporting back to the Ministry team, if necessary. We also have carers looking after people in the Aged Care facilities where our people are living.

There are many unofficial visits and contacts that take place within our church family. Our pastoral care worker Di, visits people in their homes, hospitals or facilities and reports back to the Inclusive Community Committee.

When we look at the current lists of visitors, many people are not able to continue providing pastoral care and their lists of people whom they care for have diminished. Inclusive Community Committee is looking at our pastoral care, the people who are providing care and what we can do better.

The aims of this missional group are to provide fellowship, care and support for all individuals and groups within this faith community so that people FEEL and KNOW that they are included.

Inclusive Community Committee provides prayer support and supportive community link within our church family. During our meetings, we spend some time talking about members of our congregation who are struggling because of health issues or other family issues. We recognise special occasions within our church community and sometimes arrange celebrations. It would be great to hear from people who could help with preparing and delivering meals, providing transport, shopping or sitting and being a companion with someone who is housebound. The list of people who are available to do these tasks, when there are requests, is quite small. You may also know someone who needs support - please tell us.

We want to work together to provide the best pastoral care that we can.

Jan Clear.

Co-ordinator of our Inclusive Community Committee.



NEW MODERATOR OF THE UNITING CHURCH

Synod 2025 commenced on Saturday, August 30 with an Opening Worship service, which this year included the installation of a new Moderator, Rev Salesi Faupula as the Synod of Victoria and Tasmania's next Moderator. He will take over from Rev David Fotheringham from 2025-28.



Born in Tonga, Salesi's family moved to Australia when he was a baby and he spent his first 10 years in the Yirrkala Aboriginal mission in the Northern Territory, where his father was a Free Wesleyan Church of Tonga Minister.

Rev Salesi Faupula and family members.

Recent Events at Our Church:

THE SENT ONES - Rev Dr Karina Kreminski's "Mission Matters" workshop.

Rev Dr Karina Kreminski's highly-anticipated visit to Port Philip East gave the congregations of the Presbytery the chance to get down to the nuts and bolts of modern mission.

With 25 congregations represented at the event at Glen Waverley Uniting Church, the morning offered the opportunity to exchange stories, lessons and reflections ready to set out intentions for mission moving forward. The session was a welcome change to calibrate our approach, and to celebrate the incredible diversity of our vibrant region of Melbourne. (Source: Newsbeat June 2025).

"We are redeemed, called, and forgiven so that we can go out and be a blessing to the world". (Karina)



Follow the QR code to get your copy of Karina's book "Urban Spirituality: Embodying God's Mission in the neighbourhood".



CHRISTMAS IN WINTER - Free Spirit & Hymn Singing Sunday 29th June

A celebration of beautiful Christmas music and hymns was followed by a delicious afternoon tea. All proceeds went to GWUC Welfare.



MANANDO STATE UNIVERSITY CHOIR IN CONCERT Monday 30th June

The Manado State University Choir (Music Director and Conductor: Professor André de Quadros), from the province of North Sulawesi, a mixed-voice chamber choir has been acclaimed for its remarkable artistry and creativity, capacity to move an audience, and beautiful sound.

"Manado State University Choir represents not only the country of Indonesia but in a more complex sense, new directions in choral music worldwide."





Glen Waverley Uniting Church
Corner Bogong Avenue & Kingsway

Annual Fete

教會年慶

Saturday
18 October
8.30am to 2.00pm

All proceeds support the community projects of Glen Waverley Uniting Church.

SOMETHING FOR EVERYONE!

Food Stalls, Cakes & Jams, Plants, Craft, Jewellery, Kids Activities, Face-painting, Popcorn, Toys, Silent Auction, Books, Treasures & Collectables, Music and MORE...

Donations Welcome: Donations for stalls including books, plants, household items, toys, treasures or small electrical items (in working order) may be delivered on Friday 17 October 9am-7pm. **Please note:** We are unable to accept mattresses, furniture, pre-loved clothing or unsaleable items.

For more details contact GWUC Church Office - 9560 3580 | office@gwuc.org.au

Annual Fete

Saturday
18 October
8.30am to 2.00pm

How can YOU help?

SIGN UP to be part of the team...

No previous experience necessary! Lots of jobs - big and small! Put your name on the list on the table in the foyer if you can assist. We need:

- **People who are fit, to assist in fetching and assembling tables and booths** and collecting donated items to be sold (trailers also needed). **Could you get a day off work to be part of a friendly team?** (Help is needed to set up on Thursday and Friday, clean up on Saturday and do final returns on Monday).
- **Everybody to sort and arrange items for sale on the Friday (Set up day!).** This is a mammoth task, and extra help is needed, particularly for the Trash & Treasure and Book Stalls..
- **Staff for the various stalls on Saturday (FETE Day!)** Can you spare an hour (or more)?
- **Lots of people to assist in the clean-up** starting at 2pm on the Saturday. Are you able to assist with some of the heavier moving? Every little bit helps!

Sign-up sheets are out now

Please consider making yourself available on these days.

It's Spring! Time for a Spring clean?

It's time to sort out those cupboards and de-clutter those bookshelves! Pre-Loved Treasures, Collectables and Books all need donations from you to stock their stalls, & our craft and plant stalls will appreciate your donations of craft and gift items & potted plants and seedlings.

Help stock our stalls...

The cake stall is always the first to sell out! Cakes, biscuits, jams & preserves are all popular. Each item must be labelled with the ingredients and when baked (labels available from the foyer table). If you would prefer not to bake, consider a **Bakeless Cake**. "Recipe" envelopes are now available from the table in the foyer.

...and don't forget those handmade craft items, books, plants, household items, toys, treasures & small electrical items (in working order please). Please note: we are unable to accept mattresses, furniture, clothing or unsaleable items.

Items for any stall may be delivered to the church on **Friday 17 October between 9am-7pm** (Collection can be arranged. Please put your name on the list on the table in the foyer.)

We are always grateful to receive your donations for the fete, but ask that they are in a sale-able condition as disposing of items not sold is very expensive.

\$2 boxes

Please take one (or more), fill it with goodies and return filled boxes to the specially marked box in the foyer. It will be sold for \$2, with children in particular enjoying selecting their purchase. Please note that sweets must be wrapped, and not past their use-by dates. (Please no nut products.)

Silent Auction

Thank you to all for your past donations towards the Silent Auction. We look forward to receiving all the lovely new goodies that you have in store for us this year. If you have any items (goods, services or vouchers) you would like to donate for the Silent Auction, or if you have any contacts with businesses, friends or family that you think may be able to donate, please contact the church office.

More Information:

Sue Morgan: 0417 382 429 | Peter Anderson: 0411 123 253
Sachin Remson: 0421 365 682 | or the church office.

All fete proceeds support the community projects of GWUC

CONGREGATIONAL OUTREACH PROJECTS 2025

Outreach and Social Justice Mission Group, at the request of Church Council, have overseen the 2025 COP process. Three members of the group were appointed to become the COP Selection Panel. The Panel received 4 applications for a grant. In line with COP Procedures, where insufficient applications are received, the panel has recommended a further 2 grants in support of UCA services. All six projects were considered carefully and checked against assessment criteria, alignment with UCA mission, number of people to benefit and needs to be met. All projects were commended and approved to receive funding from proceeds of our Annual Fete.

Yours in Christ, 2025 COP Selection Panel - Margaret Fraser, Pam Bunney, Annette Wojak



The COP Projects for 2025 will be:

- 1. GWUC Welfare** provides welfare assistance to individuals and families in need in our local community. Welfare offers non-perishable food and toiletries, vouchers, and support with education related expenses like uniforms and books. Through the provision of supermarket and pharmacy vouchers, people gain a sense of empowerment in purchasing essential items themselves. Clients include people who are disadvantaged, homeless, lost their jobs, suffering from mental and physical illness and unable to work, asylum seekers and refugees.
- 2. Nourishing our Neighbours (NoN)** was setup with two purposes: to provide food to those in need and to safeguard the environment by preventing food going into landfill. Volunteers collect food from supermarkets, grocers and bakeries every day and then re-distribute products directly to clients in Box Hill North and Blackburn South. NoN also distribute excess food
- through many organisations such as Uniting Food Relief Burwood.
- 3. Quilts for Orphans**, established in 2007, is an organisation of volunteers who make and gift handmade quilts, creating fabric hugs for children and adults in need. Quilts are gifted across Australia and worldwide through a wide range of organisations, including: hospital newborn and paediatric intensive care units, short term care services for vulnerable children, domestic violence organisations, palliative care and aged care settings and refugee services.
- 4. Uniting World Fiji.** UnitingWorld is the international aid and partnerships agency of the Uniting Church in Australia. Uniting World partners with the Methodist Church in Fiji to prepare its congregations and communities to strengthen disaster preparedness and climate resilience in the face of climate change. Trained church leaders and chaplains can offer immediate and ongoing emotional and spiritual support, grounded in faith and cultural
- understanding, to people affected by climate-related disasters.
- 5. Frontier Services.** Australian people who live out bush experience the tyranny of distance and social isolation. These include indigenous communities, isolated properties, mining communities, and other remotely located communities. And for them, we are the people who knock on the door, take the time to listen, offer a helping hand, and be of service.
- 6. Moderator's Emergency Response Fund, UCA.** Funds may be used within the Synod of Victoria and Tasmania to: provide for pastoral, ministry, and mission activities to assist in the Church's responses to disasters, emergencies or other crises; support relevant councils of the Church to undertake disaster preparation programs & response, programs & processes; partner with other organisations in disaster preparation & response programs and

Impact Report from Kids Under Cover

...following the receipt of GWUC's 2024 COP Funds

Kids Under Cover extends their thanks to the congregation's support of their work to prevent youth homelessness. Our donation contributed to five education scholarships for young people living in vulnerable circumstances.

Of the 16,000 young people seeking support from Victorian homelessness services last year, 3,300 were aged between 10 and 14 and were unaccompanied by an adult or carer. Homeless young people have specific needs because they lack financial and personal independence, and so they have little hope of affording community housing and also do not have access to appropriate support.

Kids Under Cover believes prevention is better than cure, and so focuses on secure accommodation and the opportunity to engage in education or employment. Their relocatable studios provide life-changing relief for families in crises, living in overcrowded homes. Their

studios help prevent young people becoming homeless, or alternatively ensure better reunifications with family and community.

Kids Under Cover has over 650 studios currently in place, each night housing nearly 1,000 young people at risk across Victoria.

The families that Kids Under Cover work with are often living in the most vulnerable of circumstances. Kids Under Cover also encourage young people to remain in education through their Scholarship Program, which is how they have used the funds from the congregation's COP donation. Remaining in and completing secondary school is a primary indicator of future life outcomes, and therefore critical to helping young people transition successfully to adulthood.

Our congregation's contribution has seen five young people at risk of homelessness awarded with Education Scholarships. For example, Kids Under Cover was able to support a family with several young people living with severe autism by providing two of them Education Scholarships. These helped them stay engaged in education, and so have a better chance of achieving their dreams.

GLEN WAVERLEY UNITING CHURCH
corner Bogong Avenue & Kingsway



SENIORS' MORNING TEA AT THE HUB

THURSDAY 30 OCTOBER
10AM - 12PM

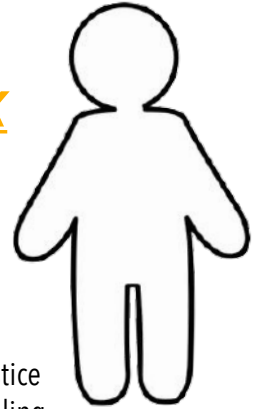
PROUDLY SUPPORTING MND VICTORIA
providing care & support for people living with Motor Neurone Disease



Groups of 10 or more, please call 9560 3580

OUTREACH AND SOCIAL JUSTICE MISSION GROUP

Calico dolls project for sick children in hospital



The Outreach and Social Justice Mission Group have found willing helpers to create calico dolls for use at Monash Medical Centre hospitals. The dolls are to be used by doctors and therapists who draw on them to help to explain to sick children about medical procedures being done to help them. Some dolls are simply gifted to young children. Margaret Fraser mentioned this need to Rachel Porter who took up the challenge on behalf of the Waterford Valley Lakes Village craft group that she coordinates. The result has been quite remarkable. We wish to thank Rachel and all her craft group for this wonderful response.

"The Waterford Valley Lakes craft group had a very successful working bee and completed approximately 50 dolls. The ladies at Waterford Valley Lakes are all working very hard again and I have another bag of 50 ready to go and another spare 23 ready for another bag of 50."
(Extract from Rachel Porter's email)

The Monash Hospital Foundation is very appreciative of this kindness and is very keen to establish an ongoing relationship with the craft group.



Ladies from the Waterford Valley Lakes Retirement Village who created all the calico dolls under the guidance of Rachel Porter.

YOU ARE INVITED



CHRISTMAS MORNING TEA



DECEMBER

THURSDAY | 4 | 10am - 12pm

Glen Waverley Uniting Church
Corner Bogong Avenue & Kingsway

Donations welcome for needy families in our Community

GROUPS OF 10 OR MORE
PLEASE CALL 9560 3580

ALL WELCOME

Story for the Young People

It was a cold, rainy afternoon, and the youth group at the local church had gathered for their weekly meeting. The power had gone out, and the storm outside lashed at the windows.

Among them was a boy named Eli. He was quiet, thoughtful, and often unsure of where he fit in. Lately, he'd been feeling lost—like he was walking through life in the dark, unsure if Jesus was really listening.

As the rain poured harder, their youth leader pulled out an old lantern from the cupboard. "This lantern," he said, "was used by my grandfather when he was a missionary in the outback. He told me something I've never forgotten: 'Even in the darkest night, Jesus is the light that never goes out.'"

Eli stared at the lantern, its soft glow warming the room. Something about those words stirred something deep inside him.

Later that night, as the storm calmed and the power returned, Eli stayed behind. His youth leader sat beside him. "Do you think Jesus really sees me?" he asked quietly.

His youth leader smiled. "He doesn't just see you, Eli. He walks beside you. Even when you feel lost, He's lighting the path ahead—one step at a time."

Eli nodded slowly. For the first time in weeks, he felt peace. Not because the storm had ended, but because he knew he wasn't facing it alone.

From that night on, Eli carried a small flashlight in his backpack—not just for emergencies, but as a reminder: Jesus is his light, even when the world feels dark.



Did you know?

- More than half (51.5%) of Australian residents were born overseas or have at least one parent who was.
- Since 1994, more than 7.6 million people have migrated to Australia.
- Nearly every single country from around the world was represented in Australia's population in 2020.
- More than 150 Aboriginal or Torres Strait Islander languages are spoken in Australia.
- Apart from English, the most common languages spoken in Australia are Mandarin, Arabic, Vietnamese, Cantonese and Punjabi.
- We identify with over 300 ancestries.

(Source: Newsbeat June 2025)



Six Faith Questions:

1. **What started you in your journey in faith?**
2. **What is the biggest help to keep you growing in faith?**
3. **Can you tell us about a time your faith has been really tested?**
4. **Is your faith different today than when you were young?**
5. **Is there anything else you'd like to share about your journey?**
6. **What can we pray for you in your journey in faith?**

(Source: Newsbeat June 2025)

Prophets of a future not our own

The prayer below is strongly linked to the life and achievements of Oscar Romero. He was a Catholic Archbishop in El Salvador, who stood against the violence occurring during the Salvadorian civil war. He promoted peace, stressing that this could only be ensured when all people have their basic needs met and their human rights respected. He was shot by an assassin while conducting Mass in 1980.

It helps, now and then, to step back and take a long view.

The kingdom is not only beyond our efforts, it is even beyond our vision.

We accomplish in our lifetime only a tiny fraction of the magnificent enterprise that is God's work.

Nothing we do is complete, which is a way of saying that the Kingdom always lies beyond us.

No statement says all that could be said.

No prayer fully expresses our faith.

No confession brings perfection.

No pastoral visit brings wholeness.

No program accomplishes the Church's mission.

No set of goals and objectives includes everything.

This is what we are about.

We plant the seeds that one day will grow.

We water seeds already planted, knowing that they hold future promise.

We lay foundations that will need further development.

We provide yeast that produces far beyond our capabilities.

We cannot do everything, and there is a sense of liberation in realising that.

This enables us to do something, and to do it very well.

It may be incomplete, but it is a beginning, a step along the way, an opportunity for the Lord's grace to enter and do the rest.

We may never see the end results, but that is the difference between the master builder and the worker.

We are workers, not master builders; ministers, not messiahs.

We are prophets of a future not our own.



This prayer was first presented by Cardinal Dearden and is an excerpt from a homily later honouring Oscar Romero and others.



Bill Norquay's Bowl

A few years ago the property committee was having a clean out of unused items and asked me if I wanted the old Bogong Ave baptismal font for the timber, otherwise it would be thrown out. As I find it hard to refuse good timber I took it and made some items from it. Recently I was having a cleanup and found the lid from the font at the back of one of my heaps. It was easily recognisable by its octagonal shape and the timber. I was tempted to use it as firewood but decided to try a different technique to make a bowl. The result was a small octagonal bowl shown in the photo. I have left the original octagon shape with the bevel edge and with the original varnish. The cover was made from three pieces dowelled together and the dowels show. It is finished with a beeswax based polish that is food safe but not suitable for liquid. Some in the congregation will have memories of it, some will have had their children baptised from it. It will be offered at the Silent Auction at the Fete with no reserve. *Bill.*

Are you NEW to Glen Waverley Uniting Church?

We have activities for Children, Families, Youth, Young Adults, Seniors & All Ages!



At this link <https://gwuc.org.au/im-new/> you will find:

- What we stand for
- Who's Who
- Worship Times
- Finding Us
- Groups

Glen Waverley Uniting Church Ministry Team



Rev. Ian Ferguson
Minister of the Word
0438 547 842
iferguson@gwuc.org.au



Rev. Chris Waddell
Minister of the Word
0418 373 065
chris.waddell.gwuc@gmail.com



Di Paterson
Pastoral Care Worker
0400 961 052
dpaterson7@bigpond.com



Joanne Boldiston
Office Manager
9560 3580
office@gwuc.org.au

Ministry Team & Office Email minteamandoffice@gwuc.org.au

GWUC Bank Account

Account Name: Uniting Church Glen Waverley | BSB: 033 052 | Account Number: 92 2198

"Kingsway" is a regular magazine of Glen Waverley Uniting Church. It is designed to provide a voice for the church community to share activities, thoughts, celebrations, stories and the faith journey, and will present to the church community the quiet achievers and achievements in the life of our church. "Kingsway" has a multi-generational, multi-cultural and missional focus and is designed to build community, lift the spirit and strengthen our faith. If you have an item, article or notice that you think will be just right for "Kingsway", please contact Joanne Boldiston (office@gwuc.org.au) or David Fraser (davidfraser60@gmail.com).