

Uniting Food for Families

Again our congregation is collecting non perishable food items and toiletries for the Food for Families Appeal which this year is broader than Wesley Mission as it is part of Uniting. Items include breakfast cereal, pasta and pasta sauce, rice, long life milk, canned fruit, soups, ring pull canned meals etc. Boxes for donations in the foyer.

Christmas Bowl

Christmas Bowl envelopes are now available on the Stewards Table for those who might wish to support.

Flower Roster 2018

We are looking for more people to join the flower roster for 2018. Please see the sign-up sheet on the office counter or enquiries to Lesley Lamble.

Next Year - Book Sale - March 3, 2018

Next year, we will again be holding a used book sale to raise money for the Church. Please put aside books you have read to donate to the sale and save the date in your diary. Helpers on the afternoon of March 2 and on the day would be very much appreciated.

We also need a photo to feature on the publicity signs and flyers, preferably of a child and with a focus on books (We did feature David Morgan one year, but raised far less that year! - of course the two may not be related). If you have a suitable photo, Sue would love to use it.

For further information, contact Sue Morgan 9560 8024.

GLEN WAVERLEY UNITING CHURCH

Cnr Bogong Avenue & Kingsway,
Glen Waverley, VIC, 3150

Office: Mon & Thu: 9.30am - 5pm
Tue, Wed & Fri: 9.30am - 3pm
(Except Public Holidays)

Heather Hon - Office Manager
Wendy Pepper - Office Assistant
9560 3580

office@gwuc.org.au
gwuc.org.au

MINISTRY TEAM

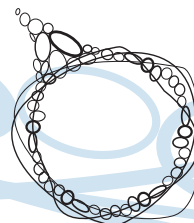
REV NEIL PETERS - MINISTER OF THE WORD
9561 3031 - revneilpeters@gmail.com

DI PATERSON - PASTORAL CARE WORKER
0400 961 052 - dpaterason7@bigpond.com

ALANEE HEARNshaw - YOUTH & YOUNG ADULTS
0402 030 342 - alaneeh@gmail.com

DIETRICH CHEUNG - CROSS CULTURAL MINISTRY
0435 596 784 - dietrich.cheung@gmail.com

Account Name: Uniting Church Glen Waverley
BSB: 033 052 Account Number: 92 2198



Glen Waverley Uniting Church

WEEKLY BULLETIN

Welcome to Glen Waverley Uniting Church which is a faithful, Christ-centred community that meets God and shares that unconditional love

If you're new to our congregation, please say hello at the welcome table in the foyer after the service.

SUNDAY DECEMBER 17

Advent 3

8.00 am Contemplative - Communion	Ross Mackinnon
9.15 am Interactive	Rev Neil Peters
11.00 am Uniting Voices Carol Service	Rev Neil Peters
7.00 pm Christmas Interactive Stations and quiet reflection	Alanee Hearnshaw

Today's 9.15 and 11am services are being recorded

Isaiah 61:1-4, 8-11; Psalm 126 or Luke 1:46b-55; 1 Thessalonians 5:16-24;
John 1:6-8, 19-28

SUNDAY DECEMBER 24

Advent 4

10.00 am Combined Christmas Service	Ministry Team
5.00 pm Families Unpack Christmas	Rev Neil Peters / Di Paterson
11.00 pm Creative Christmas Worship	Alanee Hearnshaw / Young Adults

2 Samuel 7:1-11, 16; Luke 1:46b-55 or Psalm 89:1-4, 19-26; Romans 16:25-27;
Luke 1:26-28



What's on this week?

(Legend: R1-Room 1, R2-Room 2, R3-Room 3, R4-Room 4, K-Kitchen, F-Fellowship Area, C-Church, H-Hall, P-Playground, V-Vestry, O-Outside Venue, G-Grass Area, CO-Office, SSpace - Sacred Space)

Monday 18 December

8.00	pm	Badminton	H	Office Open 9.30am - 4.30pm
8.00	pm	Young Adult Group	O	Enq: Onn Chin 9884 4061
				Enq: Alanee Hearnshaw 0402 030 342

Tuesday 19 December

Office Open 9.30am - 3pm

Wednesday 20 December

4.00	pm	Hub Kids Christmas	H/C/F	Office Open 9.30am - 3pm
				Enq: Alanee Hearnshaw 0402 030 342

Thursday 21 December

2.00	pm	M&M Club	F	Office Open 9.30am - 5pm
				Enq: Angus Peters 0403 029 727
				Andrew Hosking 0401 231 034
4.00	pm	Hub Kids Christmas	H/C/F	Enq: Alanee Hearnshaw 0402 030 342

Friday 22 December

12.00	noon	Cooee	F	Office Open 9.30am - 3pm
				Enq: Office 9560 3580

Saturday 23 December

1.00	pm	Social Tennis	O	Enq: Graeme Pratt 9560 7991
------	----	---------------	---	-----------------------------

Christmas Services

Sunday 24 December

10am Together actively engaging with the story of Christmas
5pm Join with families as they unpack the gift of Christmas
11pm Come and creatively engage with the story of Christmas

Monday 25 December

8.30am Christmas Worship
10am Christmas Worship

Today's Flowers in the church

The flowers in the church today are in memory of Kerryn Joy Frecker, much loved and loving daughter of Margaret and Graeme.

Arranged by: Margaret Frecker.



Today at 7pm

Sunday 17 December at 7pm we will be having some Christmas interactive stations that will create some space and quiet to reflect on Christmas.

Next Week - Special 10am Service on 24 December

All are welcome at our 10am Service on December 24, as we engage with the story of Christmas with a special All Age Nativity Worship. We will be inviting volunteers from the congregation to be a part of our live Nativity play. Feel free to come already dressed as a Nativity Character.

Christmas Morning Tea at The Hub Thank you.

Thank you to everyone who supported our Christmas Morning Tea at The Hub last week. Special thanks to the Hub volunteers who worked so well on the day and helped to make the morning a great success. We received donations of \$605, which included a few donations given by families who collected their children's nativity photos, and this was given to GWUC Welfare to help needy families in the community. Thank you everyone.

Office Matters

A reminder that the office will be closed for the two weeks weeks after Christmas. If you have any urgent office needs please make sure that you contact the office early next week.

Hall Closure - January 3 to 10 2018

During the dates of January 3 to 10 2018, the hall will be resurfaced. All hall doors will be locked and there will be no access through the hall or to the store rooms at that time. If you require anything from the store rooms, please ensure they are retrieved before those dates.

Any questions, please call Warren Greenwood on 0403028948.

Strength for the Journey

After four and a half years as Church Council Chair Helen Stewart has stepped down. As new councillors took their places Helen sought to reassure us that we'd be up to the task. She gave each of us a card entitled "Strength for the Journey" with the words "Don't worry that you're not strong enough before you begin. It is in the journey that God makes you strong." Helen has embodied this faith and done a marvellous job in circumstances that were not always easy. Reassuringly, experienced members like Alison David Morgan, Angel, Ashley (co-opted) and David Fraser were re-elected to Council. With thankful hearts we celebrate that the ministry team is now at full strength with Alanee, Di, Neil and Dietrich each with their own particular focus as part of one team. We are indeed blessed to have these faith-centred and talented leaders. New times, new challenges, new possibilities.

As I have learnt more about the myriad forms of service congregational members and groups make to build up the body of Christ I ask that you pray for our continuing work. Surrounded and inspired by the heavenly host of those who have gone before us, we seek to follow Jesus knowing that whatever challenges the road ahead throws up, others have faced greater challenges and remained faithful to our call. And for each of us as we move steadily towards the celebration of Jesus' birth, are we open to the call to discipleship? Are there small steps we can take to play our part more actively in the life and service of the congregation? Can we share the load of those who have been quietly carrying heavy burdens for a long time?

May the promise of God's gift to the world and the spirit of sharing fill your heart with joy and good will this Christmas.

Glyn Howells
Chair - Church Council



GLEN WAVERLEY UNITING CHURCH PRESENTS

HUB KIDS UNWRAP CHRISTMAS

WED 20+THURS 21 DEC

JOIN US FOR OUR ANNUAL KIDS CHRISTMAS EVENT
AS WE EXPLORE THE CHRISTMAS STORY IN AN
INTERACTIVE WAY

CRAFT - GAMES - CHALLENGES -
SNACKS - ACTIVITIES -
ENTERTAINMENT - LOADS OF FUN

\$5 PER SESSION 4PM - 6PM

REGISTER NOW

REGISTER ONLINE:
GWUC.ORG.AU
OR CALL US: 9560 3580

 GLEN WAVERLEY
Uniting Church
Located at the corner of Bogong Ave
& Kingsway, Glen Waverley